

UFIBER



ADVANCED CERAMIC BRUSHES
FOR PRECISION AND DURABILITY
IN SURFACE TREATMENT

Always evolving

UFIBER

THE NEW NOGA MT LINE OF CERAMIC BRUSHES FOR SURFACE TREATMENT

In today's fast-paced manufacturing environment, achieving superior surface finishes while maximizing efficiency is more critical than ever. NOGA MT is excited to introduce the new **UFIBER** Brush, a line of advanced ceramic fiber brushes designed to meet the highest standards of precision and durability in surface treatment applications.

UFIBER BRUSH HIGHLIGHTS

NANO-TECHNOLOGY PRECISION

UFIBER brushes utilize cutting-edge nano-technology to provide superior surface roughness control, exceptional wear resistance, and extended tool life. This innovation leads to fewer tool changes, longer operation times and lower production costs.

3-IN-1 FUNCTIONALITY

Combining deburring, polishing, and finishing in a single tool, **UFIBER** brushes streamline the manufacturing process, reducing the need for multiple tools and operations.

VERSATILE APPLICATIONS

Suitable for a wide range of tasks, including surface polishing, inner diameter polishing and small point polishing. **UFIBER** brushes perform consistently even on complex geometries and hard-to-reach areas.

AUTOMATION READY

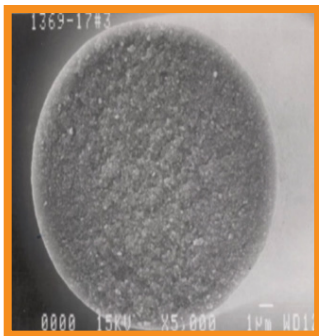
UFIBER brushes are compatible with CNC machines and robot arms, making them ideal for integration into automated manufacturing processes.



UFIBER FEATURES

NANO TECHNOLOGY FOR PRECISION POLISHING

UFIBER filament's structure leverages nano-technology to refine the grain structure of each ceramic fiber, transitioning from traditional micron-sized grains to state-of-the-art nano-sized grains. This innovation allows each fiber to maintain its edge throughout the polishing process, ensuring a consistently smooth and precise finish while offering superior wear resistance and durability.



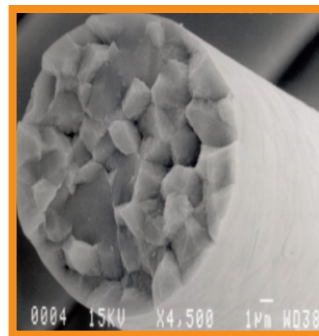
**UNMATCHED
PRECISION**

**CUTTING-EDGE
TECHNOLOGY**

**SUPERIOR
PERFORMANCE**

NOGA NANO TECHNOLOGY

versus



**LIMITED
PRECISION**

**OUTDATED
TECHNOLOGY**

**LOWER
DURABILITY**

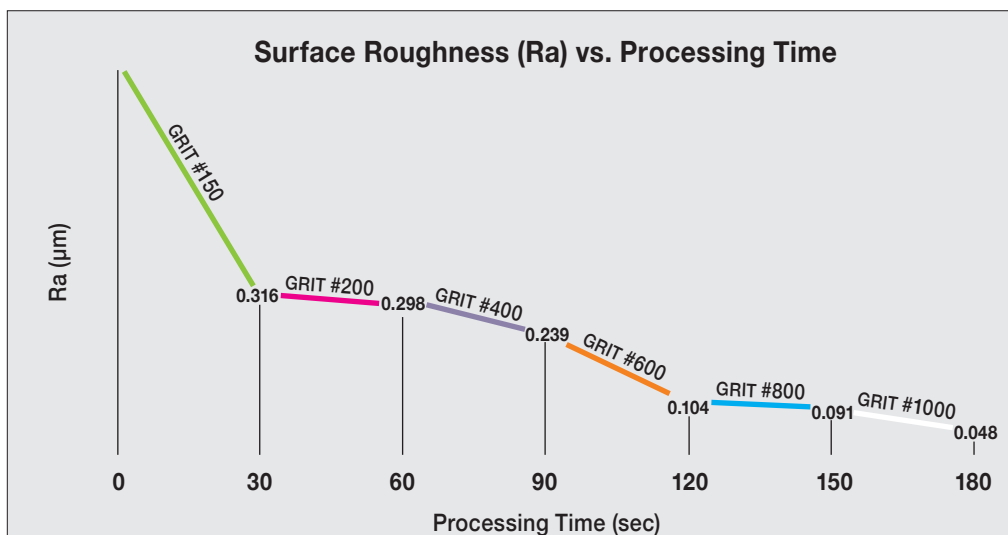
COMPETITORS

UNMATCHED SURFACE QUALITY

UFIBER bristles move beyond conventional grain structures, reducing them to nano size. This transformation results in significantly finer and more uniform surface finishes, even on the most demanding tasks. The bristle's ability to produce the finest polishing surfaces with exceptional efficiency makes them ideal for applications where surface quality is critical.

The graph illustrates the relationship between surface roughness (Ra) and processing time using different grit sizes of a **UFIBER** end brush.

As demonstrated in the graph, **UFIBER** brushes consistently reduce surface roughness with extended processing times, even on tough materials like S50C. Whether you're working with coarse or fine grit sizes, **UFIBER** brushes deliver smoother finishes faster, making them the perfect choice for industries where surface quality is paramount.



- Material: SAE 1050 / S50C / Wr. 1.1206
- Rotational speed: 3200 rpm

UFIBER FEATURES

WIDE GRIT RANGE

Wide Grit Range **UFIBER** bristles are available in grits ranging from #150 to #6000, providing flexibility to handle various work materials and burr conditions.

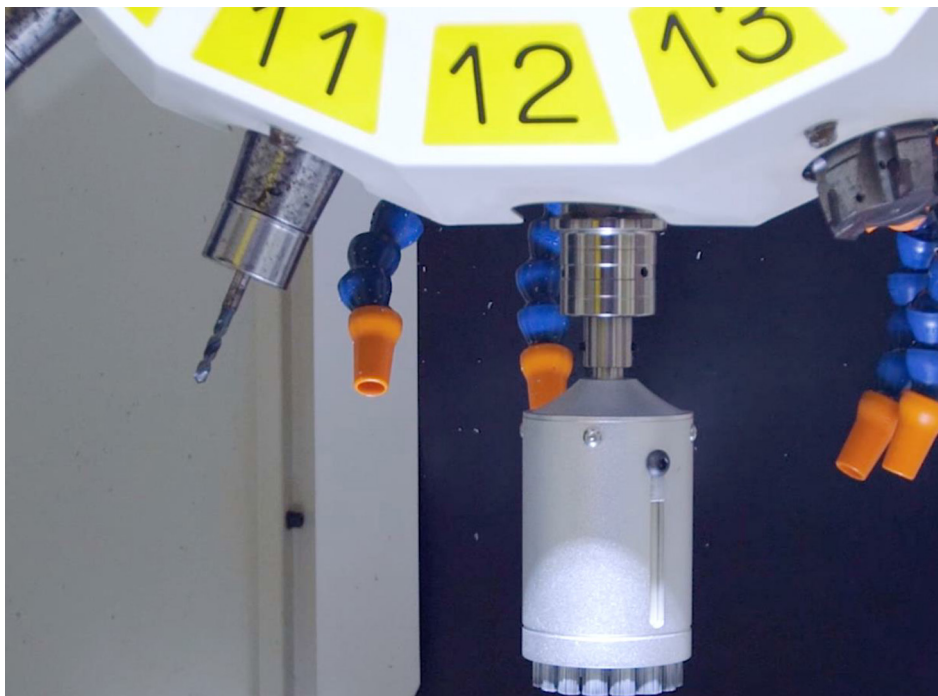


◀ **HARD**

SOFT ▶

EFFICIENT AUTOMATION

Efficient Automation with the right selection of brush type and grit, **UFIBER** brushes facilitate the automation of deburring, removal of toolmarks and the polishing processes with the same machine code or robotic arms, making them an excellent choice for advanced manufacturing environments.

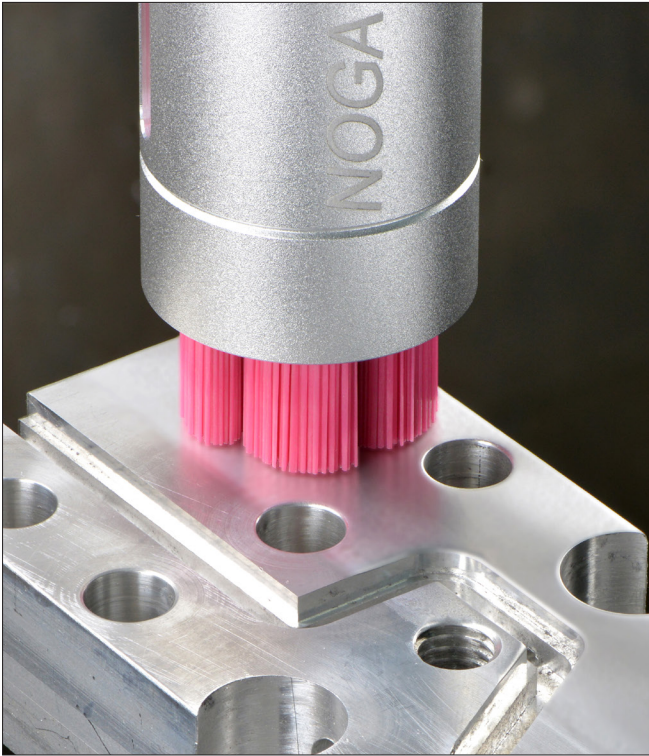


UFIBER

PRODUCT RANGE

THE NEW NOGA MT UFIBER BRUSH APPLICATIONS

SURFACE BRUSH



CROSS-HOLE BRUSH



POINT BRUSH

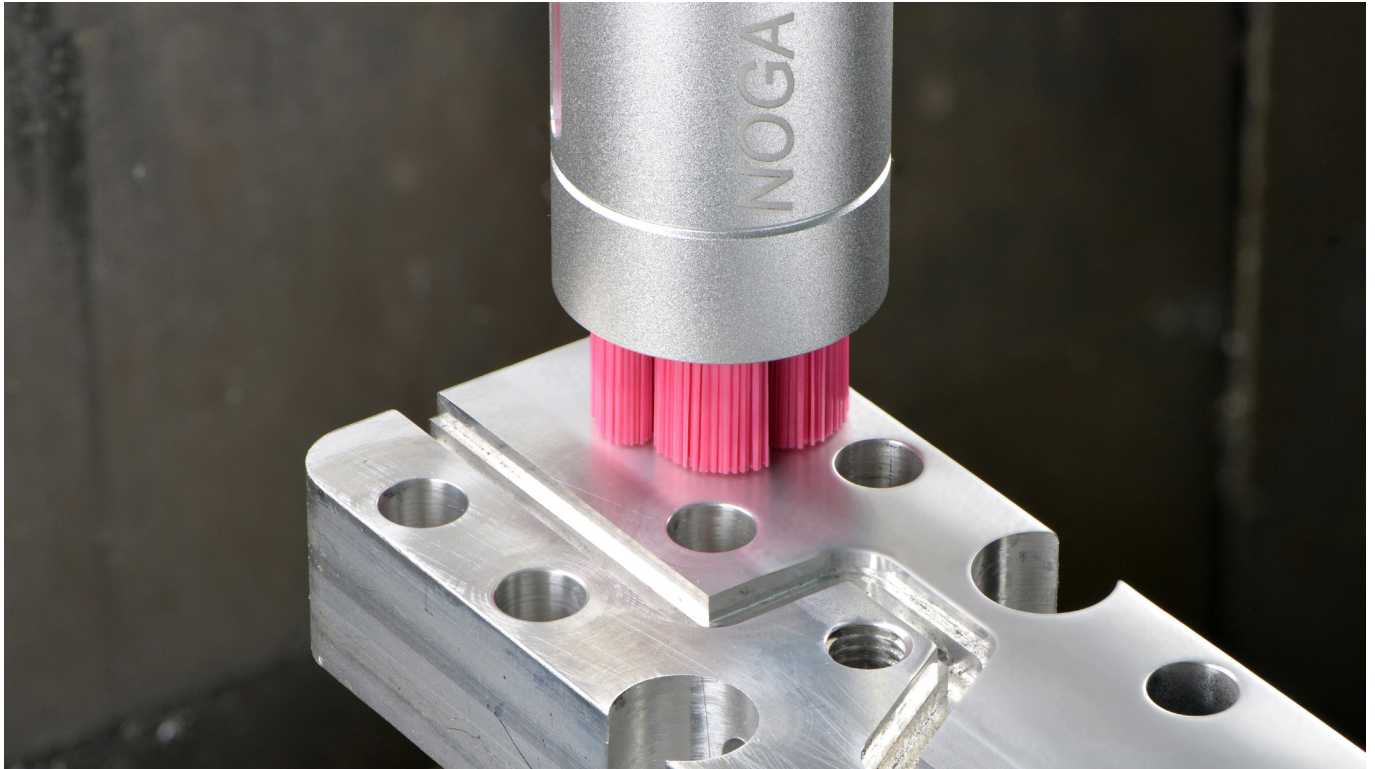


END BRUSH



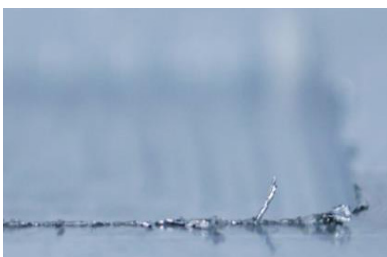
UFIBER

SURFACE TYPE BRUSHES



Designed for surface polishing and deburring, ideal for achieving uniform finishes on flat surfaces. Tip-cutting brushes are designed to fit into a sleeve with the tool shank, making them ideal for automated deburring in CNC machines, robots, and other equipment.

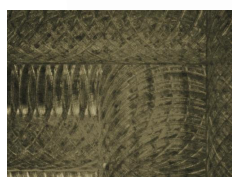
- Available Range: **6, 15, 25, 40, 60, 100 mm / 0.236, 0.590, 0.984, 1.575, 2.362, 3.937"**



BEFORE



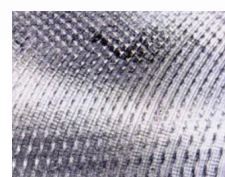
AFTER



Ra= 0.707µm



Ra= 0.086µm



Ra= 1.408µm



Ra= 0.302µm

- **Material:** Inconel 625.

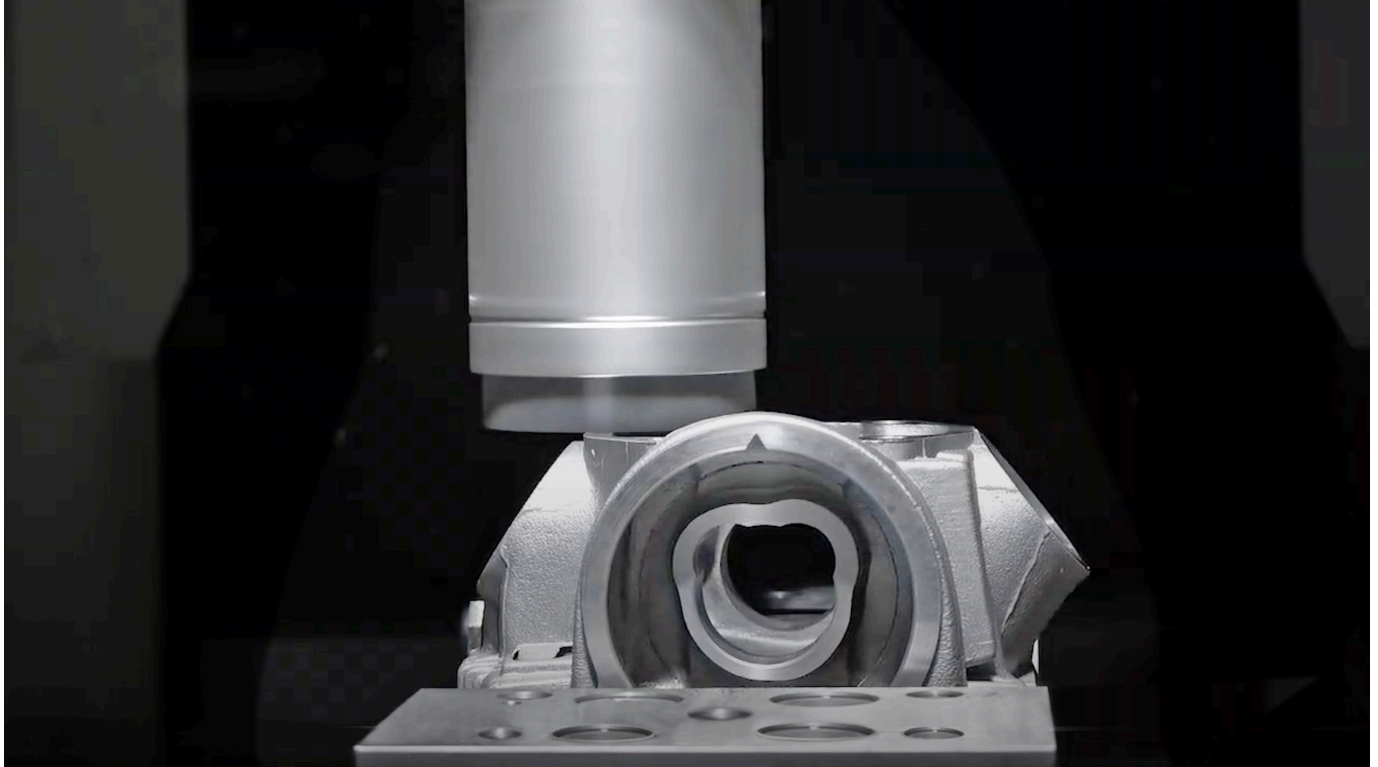
- **Surface Brush:** UF1325 / UF-FB-W-D025-L75
Ø25 Grit#400 (Violet)

- **Material:** S25S (similar to SAE 1025).

- **Surface Brush:** UF1125 / UF-FB-G-D025-L75
Ø25 Grit#150 (Green)

UFIBER

SURFACE TYPE BRUSHES

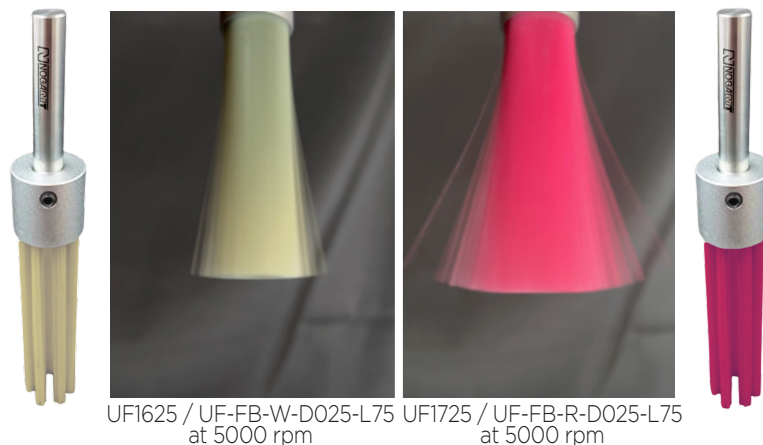


The surface brush can also function as a cross-hole brush, leveraging centrifugal force during rotation to expand and efficiently remove fine burrs from the inner surfaces of cylinders.

To use this feature, simply remove the sleeve and attach the appropriate shank (refer to pages 23-24) at the end, for a guide to the new surface brush shanks. The image below illustrates how the #1200 and #1000 Ø25 surface brushes expand at 5000 RPM. The #1200 brush is more flexible compared to the #1000 brush, allowing for greater expansion.

It is recommended to start with the #1200 brush. If burrs remain, switching to the #1000 brush is advisable.

Please note that the #1200 brush is more susceptible to breakage than other grits. To prevent damage, always insert the brush into the hole before starting rotation and stop the rotation before removing it from the hole.



UF1625 / UF-FB-W-D025-L75 at 5000 rpm UF1725 / UF-FB-R-D025-L75 at 5000 rpm

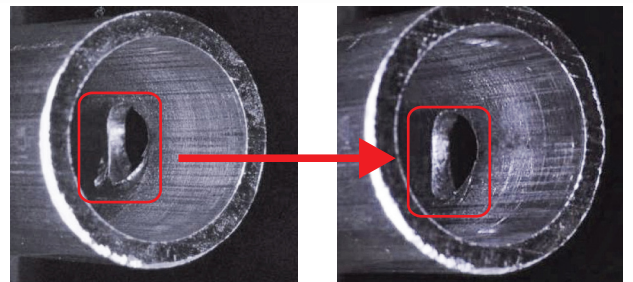
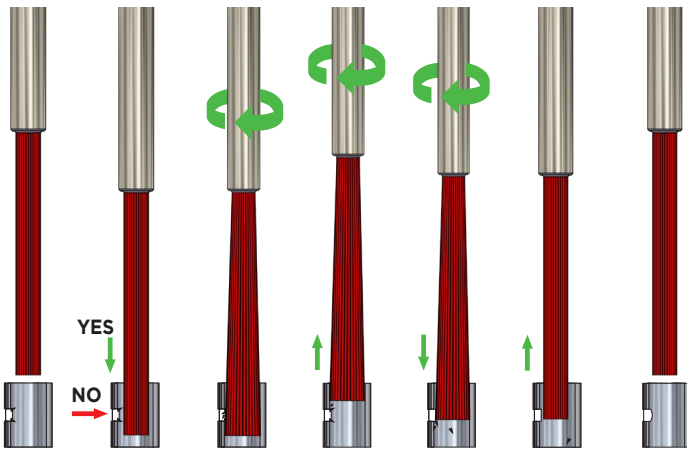
UFIBER

CROSS-HOLE TYPE BRUSHES



Designed for inner diameter polishing and cross-hole deburring. The brush expands due to centrifugal forces, allowing it to conform precisely to the pilot hole diameter, making it versatile for various applications.

- Available Range: $\varnothing 1.5, 3.0, 5.0, 7.0$ mm / 0.059, 0.118, 0.197, 0.276"
- Expansion Range: $\varnothing 3.5-20$ mm / 0.138 - 0.787"



BEFORE

AFTER

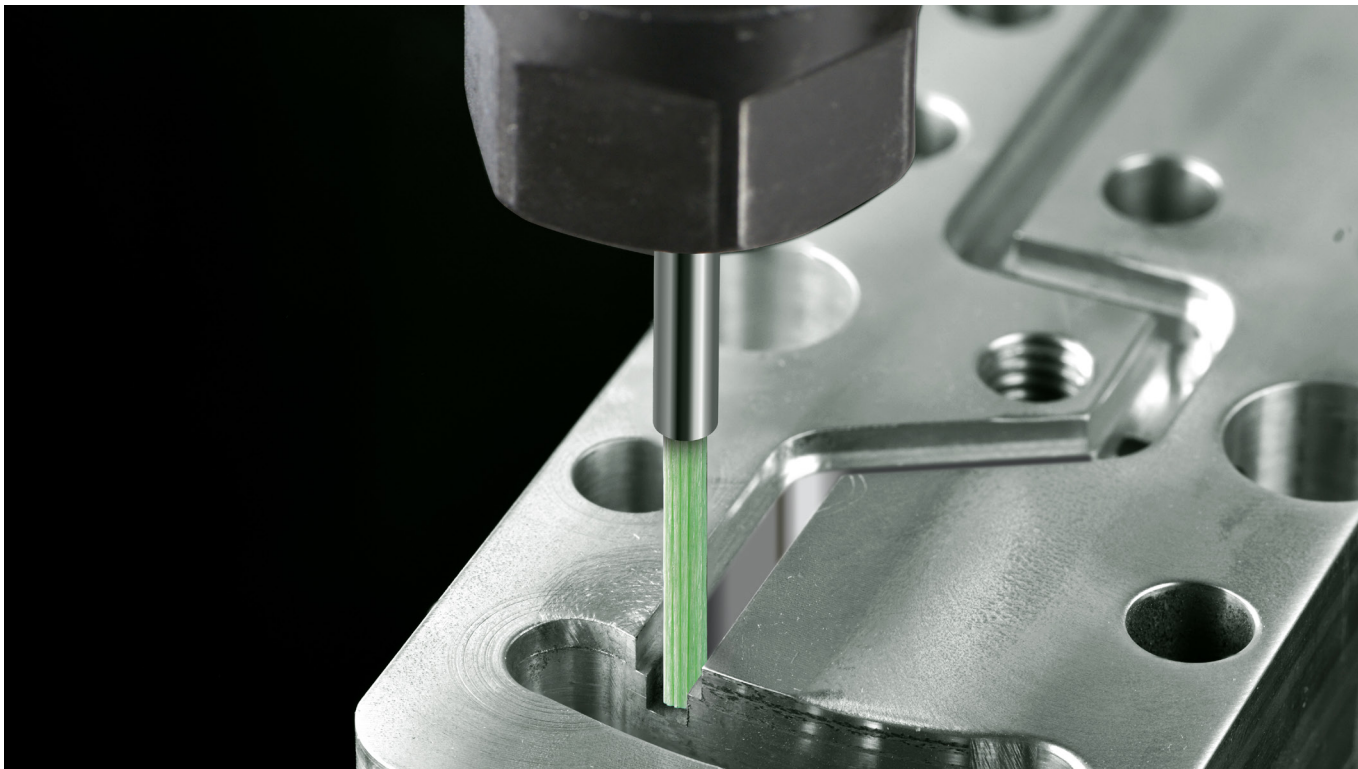


Scan the QR code or click-on the link for our Youtube application demo

<https://tinyurl.com/z6af72rv>

UFIBER

POINT TYPE BRUSHES



Suitable for precision work in small or complex areas, ideal for removing cutter marks, polishing, and finishing parts with small or narrow features. Suitable for use in CNC machines, robots, or hand-held rotary tools.

- Available with: **Ø1.0, 1.5, 2.0, 2.5, 3.0 mm / 0.039, 0.059, 0.079, 0.098, 0.118"**



UFIBER

END TYPE BRUSHES

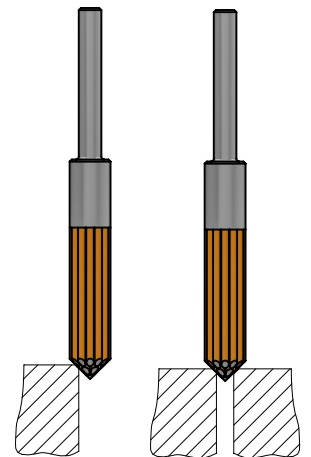


Designed for use with hand-held rotary tools and CNC machines, making it ideal for precise finishing tasks, especially in tight or recessed areas where traditional brushes may fall short. This brush features high bending strength and can operate at max. 12000 RPM without the risk of filament breakage.

- Available with: **Ø 5mm / 0.197"** - flat surface or 90° angled tip

* The brush tip can be angled using a diamond disk on a lathe or spindle.

** Not recommended with pneumatic powered tools.



- **Flat Design:** Designed for uniform deburring and finishing of flat surfaces and large areas.
- **Wide Contact Area:** The flat edge ensures consistent and even surface treatment.
- **Versatility:** Suitable for smoothing outer edges, planar surfaces, and broader geometries.

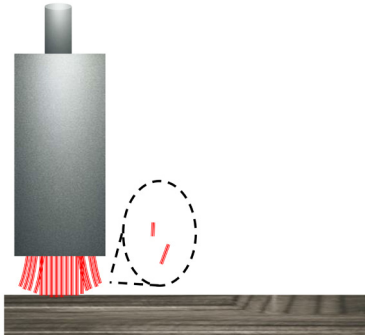
- **Angled Design:** Allows for easy access to confined spaces and hard-to-reach areas.
- **Enhanced Control:** The pointed edge provides better control for selective deburring tasks.
- **Versatility:** Suitable for deburring geometries with complex shapes and sharp angles.

UFIBER

BENEFITS OF NOGA MT UFIBER BRUSHES

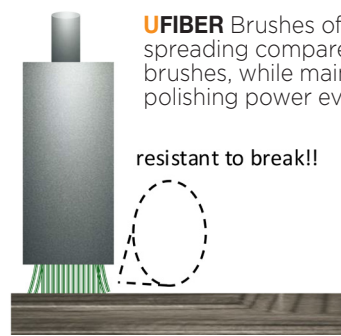
- **3-in-1 Functionality:** **UFIBER** brushes combine deburring, polishing and finishing in a single tool. This multifunctional capability reduces the need for multiple tools and operations, streamlining the manufacturing process and saving time and costs.
- **Superior Surface Finish:** The nano-bonded **UFIBER** bristles reduce polishing scratches, achieving a finer surface finish compared to conventional nylon brushes or ceramic bristles that use micro-bond technology.

Conventional brushes

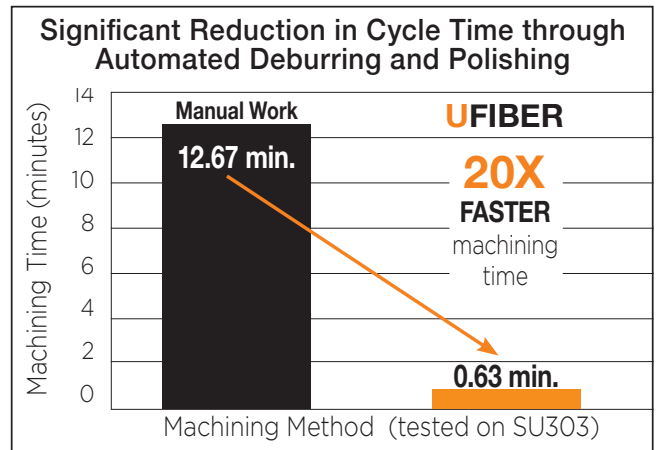


- **Extended Tool Life:** **UFIBER** ceramic fiber bristles offer better control over spreading compared to conventional brushes, while maintaining strong polishing power even at high speeds. This leads to a longer lifespan for the brushes, reducing the need for frequent replacements.
- **Stable Grinding Power:** **UFIBER** brushes provide consistent grinding power, supporting the automation of deburring and tool mark removal without the need to frequently change the brush shape.

UFIBER

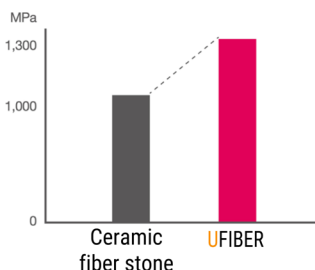


- **Time Efficiency:** **UFIBER** brushes achieve a **20X** faster machining time compared to manual work delivering unparalleled efficiency and productivity in automated deburring and polishing.
- **Automation Ready:** **UFIBER** ceramic brushes, specifically designed for seamless integration with automated systems such as machine tools and robotic arms, improve production processes by **up to 20 times faster**.
- **Versatility:** **UFIBER** brushes excel in a wide range of applications and materials, with 10 different bristle grits available, making them suitable for diverse industries and tasks.
- **High Bending Strength:** The brushes retain their shape and performance even under high RPM conditions, ensuring reliable operation and consistent results.



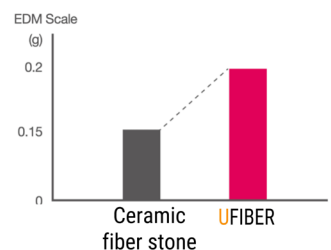
Bending strength

130%
Save Costs



Grinding performance

200%
Save time



UFIBER APPLICATIONS

The **UFIBER** brushes are suitable for any type of material in the market, including composite materials (FRP), copper, aluminium, SUS, carbon steels, stainless steel, and hardened materials. This versatility makes **UFIBER** brushes ideal for a wide range of industrial applications, ensuring high performance across various materials.



AEROSPACE

Ensures compliance with strict safety and performance standards for aircraft components.



AUTOMOTIVE

Deburrs and polishes engine and transmission parts with precision.

MEDICAL DEVICES

Provides smooth finishes for surgical instruments and implants.



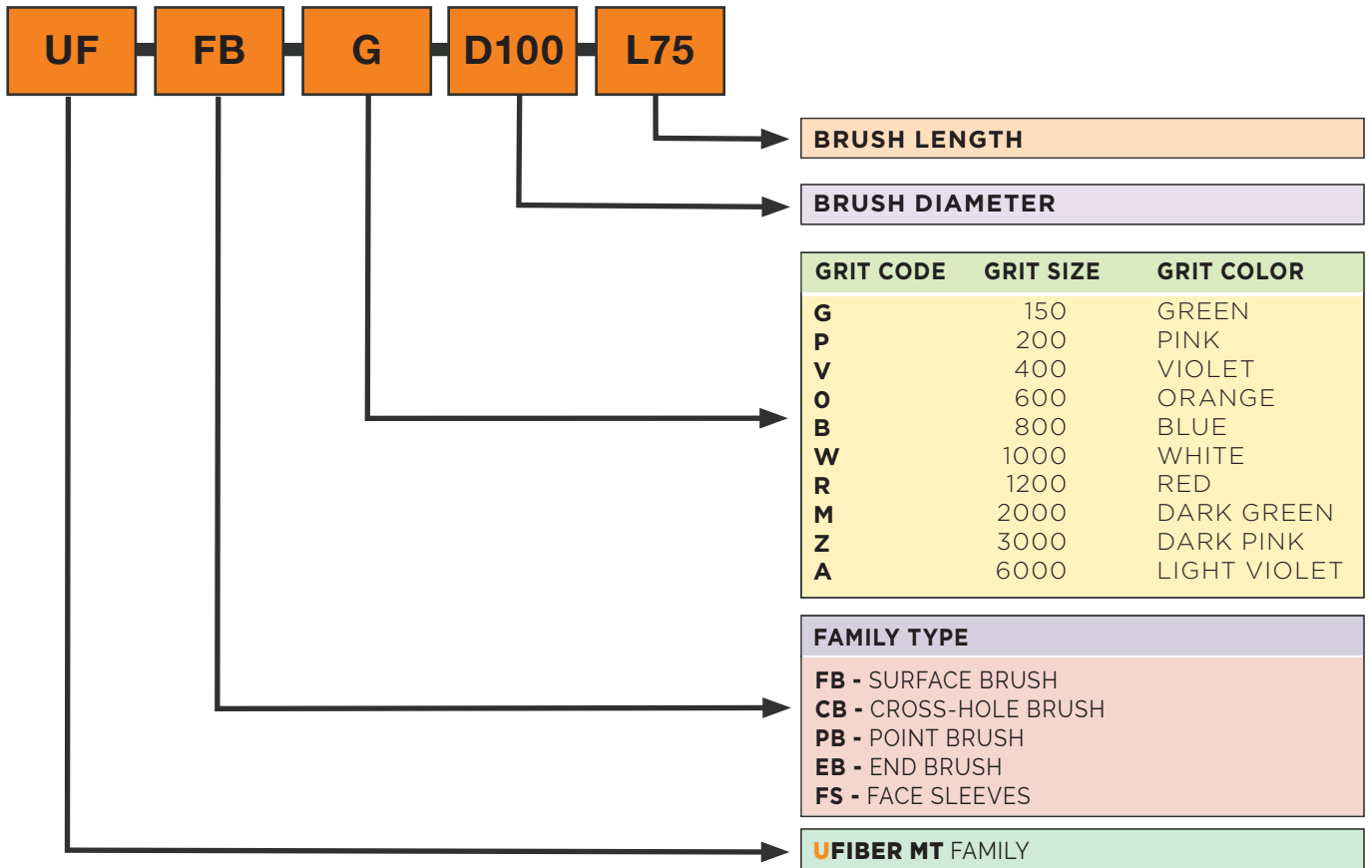
DEFENSE

Delivers high-precision finishing for complex munitions and tactical systems. NOGA MT brushes clear internal features and cross-holes to meet rigorous tolerance standards without compromising structural integrity.



UFIBER BRUSH CODING SYSTEM:

SPECIFICATIONS AND IDENTIFICATION



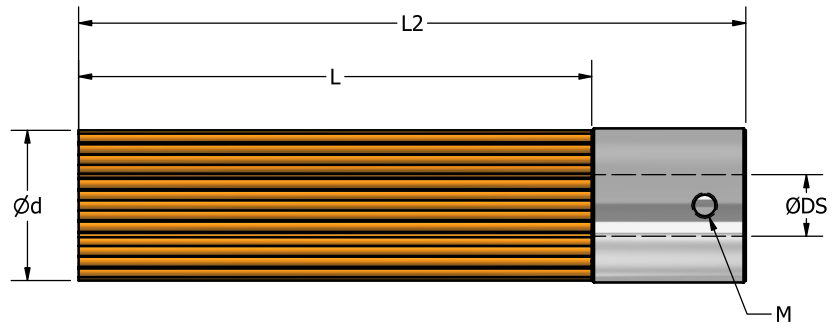
GRIT OPTIONS FOR MACHINING REQUIREMENTS

Selecting the right brush grit by machined materials or burr conditions:



UFIBER

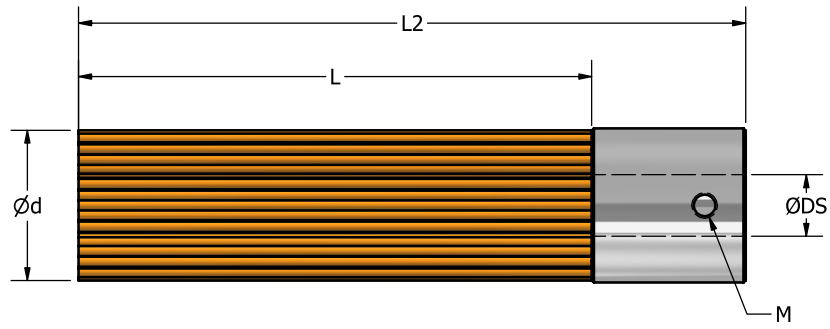
SURFACE BRUSH ITEM LIST



SKU	DESCRIPTION	GRIT SIZE	Ø d mm / inch	L mm / inch	L2 mm / inch	Ø DS mm / Inch	SPARE PARTS ⁽¹⁾ (for M)			Wt. gram	
							CLAMPING SCREW M x P x L (mm)	SKU	LN KEY L (mm)		SKU
UF1106	UF-FB-G-D006-L30	150	Ø6 / 0.236	30 / 1.181	42.5 / 1.673	N/A	N/A	N/A	N/A	3	
UF1206	UF-FB-P-D006-L30	200									
UF1306	UF-FB-V-D006-L30	400									
UF1406	UF-FB-O-D006-L30	600									
UF1506	UF-FB-B-D006-L30	800									
UF1606	UF-FB-W-D006-L30	1000									
UF1706	UF-FB-R-D006-L30	1200									
UF1806	UF-FB-M-D006-L30	2000									
UF1906	UF-FB-Z-D006-L30	3000									
UF1006	UF-FB-A-D006-L30	6000									
UF1115	UF-FB-G-D015-L50	150	Ø15 / 0.590	50 / 1.969	65 / 2.560	Ø6 / 0.236	M3 x 0.5 x 4	UF0019	1.5	DH0005	7
UF1215	UF-FB-P-D015-L50	200									
UF1315	UF-FB-V-D015-L50	400									
UF1415	UF-FB-O-D015-L50	600									
UF1515	UF-FB-B-D015-L50	800									
UF1615	UF-FB-W-D015-L50	1000									
UF1715	UF-FB-R-D015-L50	1200									
UF1815	UF-FB-M-D015-L50	2000									
UF1915	UF-FB-Z-D015-L50	3000									
UF1015	UF-FB-A-D015-L50	6000									
UF1125	UF-FB-G-D025-L75	150	Ø25 / 0.984	75 / 2.952	100 / 3.937	Ø9 / 0.354	M4 x 0.7 x 8	UF0018	2	UF0020	21
UF1225	UF-FB-P-D025-L75	200									
UF1325	UF-FB-V-D025-L75	400									
UF1425	UF-FB-O-D025-L75	600									
UF1525	UF-FB-B-D025-L75	800									
UF1625	UF-FB-W-D025-L75	1000									
UF1725	UF-FB-R-D025-L75	1200									
UF1825	UF-FB-M-D025-L75	2000									
UF1925	UF-FB-Z-D025-L75	3000									
UF1025	UF-FB-A-D025-L75	6000									
UF1140	UF-FB-G-D040-L75	150	Ø40 / 1.575	75 / 2.952	96 / 3.780	Ø12 / 0.472	M6 x 1.0 x 8	PC0044	3	DB0007	26
UF1240	UF-FB-P-D040-L75	200									
UF1340	UF-FB-V-D040-L75	400									
UF1440	UF-FB-O-D040-L75	600									
UF1540	UF-FB-B-D040-L75	800									
UF1640	UF-FB-W-D040-L75	1000									
UF1740	UF-FB-R-D040-L75	1200									
UF1840	UF-FB-M-D040-L75	2000									
UF1940	UF-FB-Z-D040-L75	3000									
UF1040	UF-FB-A-D040-L75	6000									

UFIBER

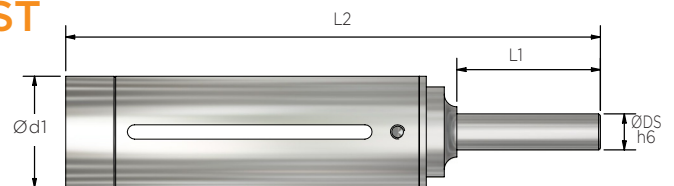
SURFACE BRUSH ITEM LIST



SKU	DESCRIPTION	GRIT SIZE	Ø d mm / inch	L mm / inch	L2 mm / inch	Ø DS mm / Inch	SPARE PARTS ⁽¹⁾ (for M)				Wt. gram
							CLAMPING SCREW M x P x L (mm)	SKU	LN KEY L (mm)	SKU	
UF1160	UF-FB-G-D060-L75	150	Ø60 / 2.362	75 / 2.952	96 / 3.780	Ø13 / 0.512	M6 x 1.0 x 20	UF0016	3	DB0007	70
UF1260	UF-FB-P-D060-L75	200									
UF1360	UF-FB-V-D060-L75	400									
UF1460	UF-FB-O-D060-L75	600									
UF1560	UF-FB-B-D060-L75	800									
UF1660	UF-FB-W-D060-L75	1000									
UF1760	UF-FB-R-D060-L75	1200									
UF1860	UF-FB-M-D060-L75	2000									
UF1960	UF-FB-Z-D060-L75	3000									
UF1060	UF-FB-A-D060-L75	6000									
UF1100	UF-FB-G-D100-L75	150									
UF1200	UF-FB-P-D100-L75	200									
UF1300	UF-FB-V-D100-L75	400									
UF1400	UF-FB-O-D100-L75	600									
UF1500	UF-FB-B-D100-L75	800									
UF1600	UF-FB-W-D100-L75	1000									
UF1700	UF-FB-R-D100-L75	1200									
UF1800	UF-FB-M-D100-L75	2000									
UF1900	UF-FB-Z-D100-L75	3000									
UF1000	UF-FB-A-D100-L75	6000									

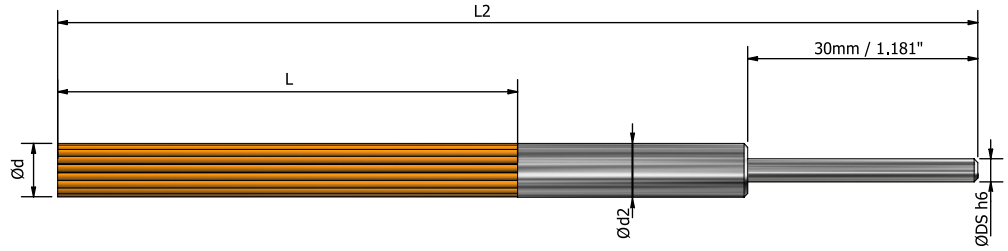
(1)The surface brush comes with 2 set-screws for mounting a shaft.
For more details, see "Versatile Surface Brush for Efficient
Cross-Hole Burr Removal" page 6.

SURFACE BRUSH SLEEVE ITEM LIST



SKU	DESCRIPTION	SUITABLE FOR SURFACE BRUSH	Ø d1 (external) mm / Inch	L1 mm / inch	L2 mm / inch	Ø DS mm / Inch	Wt. gram	SPARE PARTS (for M)			
								CLAMPING SCREW MxPxL (mm)	SKU	LN KEY L (mm)	SKU
UF5506	UF-FS-6-C06-L70	Ø 6/0.236	Ø 10/0.394	30/1.181	71/2.795	Ø 6/0.236	30	M3 x 0.5 x 4	UF0010	2.5	UF0021
UF5515	UF-FS-15-C06-L90	Ø 15/0.590	Ø 18.5/0.728	30/1.181	92/3.622	Ø 6/0.236	40	M3 x 0.5 x 6	UF0011	2	UF0020
UF5525	UF-FS-25-C10-L140	Ø 25/0.984	Ø 30/1.181	30/1.181	149/5.866	Ø 10/0.394	160	M4 x 0.7 x 10	UF0012	2.5	UF0021
UF5540	UF-FS-40-C12-L140	Ø 40/1.575	Ø 45/1.772	30/1.181	135/5.315	Ø 12/0.472	200	M6 x 1.0 x 10	UF0013	4	UF0022
UF5560	UF-FS-60-C12-L145	Ø 60/2.362	Ø 67/2.638	40/1.575	145/5.708	Ø 12/0.472	320	M6 x 1.0 x 10	UF0013	4	UF0022
UF5500	UF-FS-100-C16-L155	Ø 100/3.937	Ø 110/4.330	40/1.575	155/6.102	Ø 16/0.630	670	M8 x 1.25 x 16	UF0014	5	UF0023

UFIBER

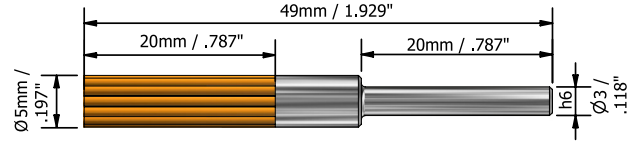


CROSS-HOLE BRUSH ITEM LIST

SKU	DESCRIPTION	GRIT SIZE	Ø d mm / inch	L mm / inch	Ø d2 mm / inch	L2 mm / inch	Ø DS mm / Inch	Wt. gram	MAX. RPM	SUITABLE PILOT-HOLE DIA.					
										GRIT #150-#1000 mm / Inch	GRIT #1200-#6000 mm / Inch				
UF2115	UF-CH-G-D015-L50	150	Ø1.5 / 0.059	50 / 1.969	Ø2.5 / 0.098	120 / 4.724	Ø3 / 0.118	3	20000	3.5 - 5 / 0.138 - 0.197	3.5 - 5 / 0.138 - 0.197				
UF2215	UF-CH-P-D015-L50	200													
UF2315	UF-CH-V-D015-L50	400													
UF2415	UF-CH-O-D015-L50	600													
UF2515	UF-CH-B-D015-L50	800													
UF2615	UF-CH-W-D015-L50	1000													
UF2715	UF-CH-R-D015-L50	1200													
UF2815	UF-CH-M-D015-L50	2000													
UF2915	UF-CH-Z-D015-L50	3000													
UF2015	UF-CH-A-D015-L50	6000													
UF2130	UF-CH-G-D030-L60	150	Ø3 / 0.118	60 / 2.362	Ø4 / 0.158	130 / 5.118	Ø3 / 0.118	6	14000	5 - 7 / 0.197 - 0.276					
UF2230	UF-CH-P-D030-L60	200													
UF2330	UF-CH-V-D030-L60	400													
UF2430	UF-CH-O-D030-L60	600													
UF2530	UF-CH-B-D030-L60	800													
UF2630	UF-CH-W-D030-L60	1000													
UF2730	UF-CH-R-D030-L50	1200		50 / 1.969		120 / 4.724								5 - 7 / 0.197 - 0.276	
UF2830	UF-CH-M-D030-L50	2000													
UF2930	UF-CH-Z-D030-L50	3000													
UF2030	UF-CH-A-D030-L50	6000													
UF2150	UF-CH-G-D050-L60	150	Ø5 / 0.197		60 / 2.362		Ø6 / 0.236	130 / 5.118	Ø6 / 0.236						
UF2250	UF-CH-P-D050-L60	200													
UF2350	UF-CH-V-D050-L60	400													
UF2450	UF-CH-O-D050-L60	600													
UF2550	UF-CH-B-D050-L60	800													
UF2650	UF-CH-W-D050-L60	1000		50 / 1.969	120 / 4.724							8 - 10 / 0.315 - 0.394			
UF2750	UF-CH-R-D050-L50	1200													
UF2850	UF-CH-M-D050-L50	2000													
UF2950	UF-CH-Z-D050-L50	3000													
UF2050	UF-CH-A-D050-L50	6000													
UF2170	UF-CH-G-D070-L60	150	Ø7 / 0.276	60 / 2.362	Ø8 / 0.315	130 / 5.118	Ø6 / 0.236	24	14000	9 - 14 / 0.354-0.551					
UF2270	UF-CH-P-D070-L60	200													
UF2370	UF-CH-V-D070-L60	400													
UF2470	UF-CH-O-D070-L60	600													
UF2570	UF-CH-B-D070-L60	800													
UF2670	UF-CH-W-D070-L60	1000		50 / 1.969		120 / 4.724								10 - 20 / 0.394 - 0.787	
UF2770	UF-CH-R-D070-L50	1200													
UF2870	UF-CH-M-D070-L50	2000													
UF2970	UF-CH-Z-D070-L50	3000													
UF2070	UF-CH-A-D070-L50	6000													
UF2411	UF-CH-O-D110-L60	600	Ø11 / 0.433	60 / 2.362	Ø12 / 0.472	180 / 7.480	Ø12 / 0.472	115	14000	14 - 20 / 0.551-0.787					
UF2511	UF-CH-B-D110-L60	800													
UF2611	UF-CH-W-D110-L60	1000													

UFIBER

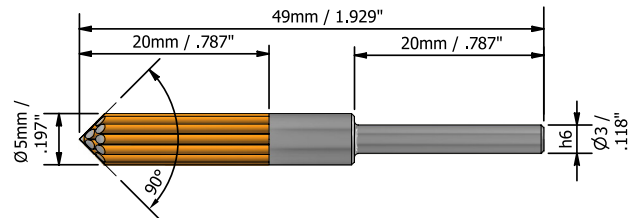
END BRUSH - FLAT



FLAT END BRUSH				
SKU	DESCRIPTION	GRIT SIZE	Wt. gram	MAX. RPM ⁽¹⁾
UF4150	UF-EB-G-D5-L20	150	3	12000
UF4250	UF-EB-P-D5-L20	200		
UF4350	UF-EB-V-D5-L20	400		
UF4450	UF-EB-O-D5-L20	600		
UF4550	UF-EB-B-D5-L20	800		
UF4650	UF-EB-W-D5-L20	1000		
UF4750	UF-EB-R-D5-L20	1200		
UF4850	UF-EB-M-D5-L20	2000		
UF4950	UF-EB-Z-D5-L20	3000		
UF4050	UF-EB-A-D5-L20	6000		

⁽¹⁾The brush bristles will maintain their original shape at maximum RPM.

END BRUSH - 90° ANGLED



90° ANGLED END BRUSH				
SKU	DESCRIPTION	GRIT SIZE	Wt. gram	MAX. RPM ⁽¹⁾
UF6150	UF-EB45-G-D5-L20	150	3	12000
UF6250	UF-EB45-P-D5-L20	200		
UF6350	UF-EB45-V-D5-L20	400		
UF6450	UF-EB45-O-D5-L20	600		
UF6550	UF-EB45-B-D5-L20	800		
UF6650	UF-EB45-W-D5-L20	1000		
UF6750	UF-EB45-R-D5-L20	1200		
UF6850	UF-EB45-M-D5-L20	2000		
UF6950	UF-EB45-Z-D5-L20	3000		
UF6050	UF-EB45-A-D5-L20	6000		

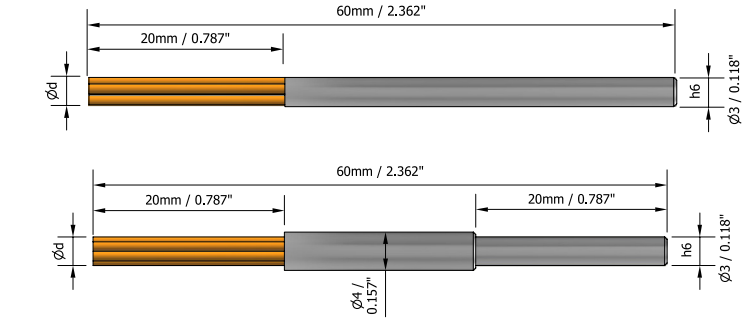
⁽¹⁾The brush bristles will maintain their original shape at maximum RPM.

UFIBER

POINT BRUSH

Dimensions for 1.0 - 2.0mm (0.039 - 0.079")

SKU	DESCRIPTION	GRIT SIZE	Ø d mm / inch	Wt. gram	MAX. RPM ⁽¹⁾
UF3110	UF-PB-G-D1-L20	150	Ø1.0 / 0.039	2	12000
UF3210	UF-PB-P-D1-L20	200			
UF3310	UF-PB-V-D1-L20	400			
UF3410	UF-PB-O-D1-L20	600			
UF3510	UF-PB-B-D1-L20	800			
UF3610	UF-PB-W-D1-L20	1000			
UF3710	UF-PB-R-D1-L20	1200			
UF3810	UF-PB-M-D1-L20	2000			
UF3910	UF-PB-Z-D1-L20	3000			
UF3010	UF-PB-A-D1-L20	6000			
UF3115	UF-PB-G-D1.5-L20	150			
UF3215	UF-PB-P-D1.5-L20	200			
UF3315	UF-PB-V-D1.5-L20	400			
UF3415	UF-PB-O-D1.5-L20	600			
UF3515	UF-PB-B-D1.5-L20	800			
UF3615	UF-PB-W-D1.5-L20	1000			
UF3715	UF-PB-R-D1.5-L20	1200			
UF3815	UF-PB-M-D1.5-L20	2000			
UF3915	UF-PB-Z-D1.5-L20	3000			
UF3015	UF-PB-A-D1.5-L20	6000			
UF3120	UF-PB-G-D2-L20	150	Ø2.0 / 0.079	2	12000
UF3220	UF-PB-P-D2-L20	200			
UF3320	UF-PB-V-D2-L20	400			
UF3420	UF-PB-O-D2-L20	600			
UF3520	UF-PB-B-D2-L20	800			
UF3620	UF-PB-W-D2-L20	1000			
UF3720	UF-PB-R-D2-L20	1200			
UF3820	UF-PB-M-D2-L20	2000			
UF3920	UF-PB-Z-D2-L20	3000			
UF3020	UF-PB-A-D2-L20	6000			



Dimensions only for 2.5 - 3mm (0.098 - 0.118")

SKU	DESCRIPTION	GRIT SIZE	Ø d mm / inch	Wt. gram	MAX. RPM ⁽¹⁾
UF3125	UF-PB-G-D2.5-L20	150	Ø2.5 / 0.098	3	12000
UF3225	UF-PB-P-D2.5-L20	200			
UF3325	UF-PB-V-D2.5-L20	400			
UF3425	UF-PB-O-D2.5-L20	600			
UF3525	UF-PB-B-D2.5-L20	800			
UF3625	UF-PB-W-D2.5-L20	1000			
UF3725	UF-PB-R-D2.5-L20	1200			
UF3825	UF-PB-M-D2.5-L20	2000			
UF3925	UF-PB-Z-D2.5-L20	3000			
UF3025	UF-PB-A-D2.5-L20	6000			
UF3130	UF-PB-G-D3-L20	150			
UF3230	UF-PB-P-D3-L20	200			
UF3330	UF-PB-V-D3-L20	400			
UF3430	UF-PB-O-D3-L20	600			
UF3530	UF-PB-B-D3-L20	800			
UF3630	UF-PB-W-D3-L20	1000			
UF3730	UF-PB-R-D3-L20	1200			
UF3830	UF-PB-M-D3-L20	2000			
UF3930	UF-PB-Z-D3-L20	3000			
UF3030	UF-PB-A-D3-L20	6000			

⁽¹⁾The brush bristles will maintain their original shape at maximum RPM.



For additional details about our UFIBER products, including the complete product range and technical guidelines, please visit our website at: <https://nogamt.com/ufiber-ceramic-brush/>

ULTIMATE INTRO! KITS

THE AGENT'S CASES UX9000 UX9001 UX9002

THREE COMPLETE DEMO KITS FOR THE **USERIES** TOOLS

Take your tooling presentation to the next level with the 3 different **ULTIMATE AGENT CASES**, the perfect hands-on sales kits featuring NOGA MT's breakthrough **U Series** solutions.



AGENT'S CASE
UX9000



MINI CASE
UX9001



MICRO CASE
UX9002

THE **UFIBER** INTRO KIT UF9000 ADVANCED CERAMIC BRUSHES

Take your finishing to the next level with the **UFIBER INTRO KIT**, featuring point and end-type brushes engineered for tight spaces, complex geometries, and a wide range of materials.

Plug & Play

8 POINT BRUSHES Ø 1.5 mm / 0.059" - 4 Grits: **#200, #600, #800, #1200**
Ø 3.0 mm / 0.118" - 4 Grits: **#200, #600, #800, #1200**

16 END BRUSHES Ø 5.0 mm / 0.197" FLAT DESIGN" - 10 Grits: **#150, #200, #400, #600, #800, #1000, #1200, #2000, #3000, #6000**
Ø 5.0 mm / 0.197" ANGLED DESIGN" - 6 Grits: **#150, #400, #600, #800, #1000, #1200**



UFIBER

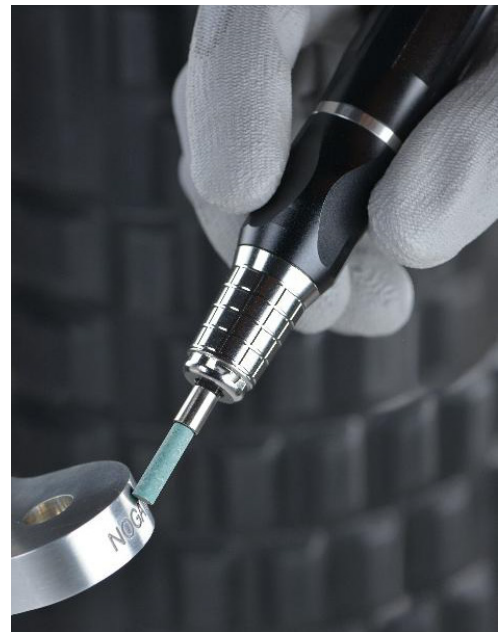
CERAMIC DIAMOND STONES

PRECISION FINISHING FOR ULTRA-HARD MATERIALS

Achieve consistent surface quality on the most challenging materials with UFIBER Ceramic Diamond Stones. Combining diamond abrasives with a nano-engineered ceramic fiber structure, these stones deliver controlled cutting, long tool life, and superior surface finish.

FEATURES

- Full-surface cutting capability – works beyond edges and tips
- Self-sharpening structure – continuous exposure of fresh abrasives
- Clog-resistant design – prevents loading and maintains performance
- High mechanical strength vs. resin-bond tools
- Multi-directional cutting – effective on all contact
- Suitable for pneumatic tools at controlled high speeds
- Can be dressed to custom shapes



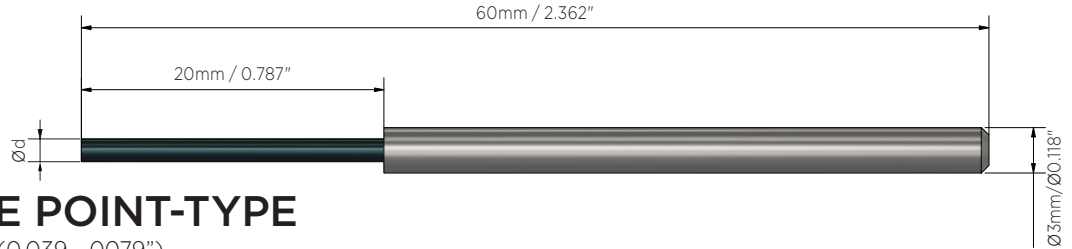
APPLICATIONS

- Tungsten carbide
- Hardened steels
- Ceramics
- Glass
- EDM-processed surfaces
- Precision components

GRIT & COLOR IDENTIFICATION GUIDE



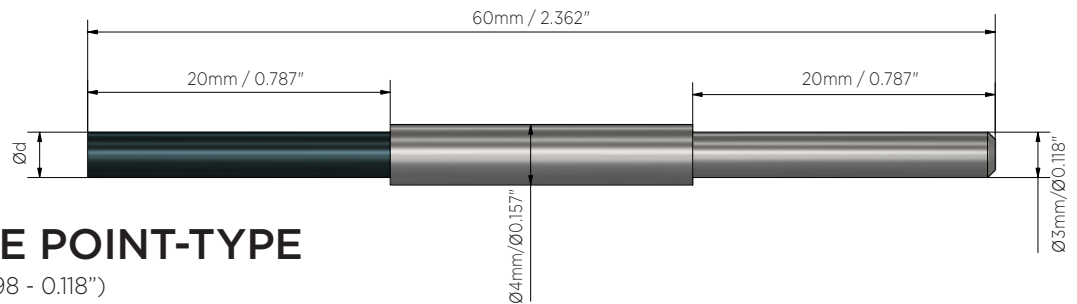
UFIBER



DIAMOND STONE POINT-TYPE

Dimensions only for 1.0 - 2.0 mm (0.039 - 0079")

SKU	DESCRIPTION	STONE COLOR	GRIT SIZE	$\varnothing d$ mm / inch	Wt. gram	MAX. RPM
UF9110	UF-DS-B-D1-L20	BLACK	200	$\varnothing 1.0\text{mm} / 0.039\text{''}$	2	60,000
UF9210	UF-DS-S-D1-L20	SILVER	400			
UF9310	UF-DS-F-D1-L20	FOREST GREEN	600			
UF9410	UF-DS-G-D1-L20	GREEN	800			
UF9115	UF-DS-B-D1.5-L20	BLACK	200	$\varnothing 1.5\text{mm} / 0.059\text{''}$	2	60,000
UF9215	UF-DS-S-D1.5-L20	SILVER	400			
UF9315	UF-DS-F-D1.5-L20	FOREST GREEN	600			
UF9415	UF-DS-G-D1.5-L20	GREEN	800	$\varnothing 2.0\text{mm} / 0.079\text{''}$	2	60,000
UF9120	UF-DS-B-D2-L20	BLACK	200			
UF9220	UF-DS-S-D2-L20	SILVER	400			
UF9321	UF-DS-F-D2-L20	FOREST GREEN	600			
UF9421	UF-DS-G-D2-L20	GREEN	800			



DIAMOND STONE POINT-TYPE

Dimensions for 2.5 - 3.0mm (0.098 - 0.118")

SKU	DESCRIPTION	STONE COLOR	GRIT SIZE	$\varnothing d$ mm / inch	Wt. gram	MAX. RPM
UF9125	UF-DS-B-D2.5-L20	BLACK	200	$\varnothing 2.5\text{ mm} / 0.098\text{''}$	3	60,000
UF9225	UF-DS-S-D2.5-L20	SILVER	400			
UF9325	UF-DS-F-D2.5-L20	FOREST GREEN	600			
UF9425	UF-DS-G-D2.5-L20	GREEN	800			
UF9130	UF-DS-B-D3-L20	BLACK	200	$\varnothing 3.0\text{ mm} / 0.118\text{''}$	3	60,000
UF9230	UF-DS-S-D3-L20	SILVER	400			
UF9330	UF-DS-F-D3-L20	FOREST GREEN	600			
UF9430	UF-DS-G-D3-L20	GREEN	800			

Controlled Finishing. Superior Results.

UFIBER PORTABLE E-PACK UF9999

RPM DISPLAY POWER PACK & HANDPIECE

BURR REMOVAL IN AUTOMOTIVE PARTS WITH SURFACE BRUSH

The **NOGA MT's UFIBER** portable **RPM** display power pack with ergonomic handpiece delivers the perfect balance of power, control, portability and is compatible with the full range of **UFIBER** brushes used for professional deburring, edge preparation, polishing and finishing, wherever precision is imperative.

MAIN BENEFITS

SLIM, POWERFUL POWER PACK WITH ERGONOMIC HANDPIECE DESIGN

- Portable, Compact & Lightweight.
- Well-balanced ergonomic handpiece for long-term use.
- Easy to use controls with RPM Display.
- Fully wireless. Fast charging. Long battery life.
- Can be operated whilst charging.
- Forward & Reverse Rotation.
- Low Vibration and Low Noise.
- High Speed - 30,000 RPM
- Stable Torque at Low RPM
- Overload Protection System
- Smooth & Efficient due to BLDC motor.



INDUSTRIAL APPLICATIONS

- Aerospace
- Medical
- Automotive
- Electronics



PORTABILITY



Integrated Belt Clip: Keeps your device safe while guaranteeing total hands-free mobility.

UFIBER PORTABLE E-PACK UF9999

RPM DISPLAY POWER PACK & HANDPIECE

SPECIFICATIONS FOR POWER PACK

POWER PACK TECHNICAL SPECIFICATIONS	
DESCRIPTION	SPECIFICATION
RPM	Max 30,000 RPM
INPUT	100 - 240V ~ 50/60Hz
OUTPUT	DC 12.6V / 2A
DIMENSION	65 x 129 x 36 mm
WEIGHT	255 g
BATTERY CHARGING TIME	2 hours
WORKING TIME	10 hours

OVERLOAD PROTECTION



Automatically shuts off during overload for maximum safety

SPECIFICATIONS FOR HANDPIECE

HANDPIECE TECHNICAL SPECIFICATIONS	
DESCRIPTION	SPECIFICATION
RPM	Max 30,000 RPM
TORQUE	Max. 3.0 Ncm
DIMENSION	128.2 x 19.8 mm
WEIGHT	113 g (without cord)

Compatible with all **UFIBER** End and Point brushes.



RPM Display
Battery Status Display

Battery Charger Connector

Forward & Reverse Selector

Pause Button

Handpiece Connector

ON/OFF Power & Speed Control Dial



Well-balance ergonomic structure for fatigue-free long-term use

Signature diamond-pattern handle for enhanced grip

Handpiece with flexible cable connected to power pack

PACK CONTAINS:

- Power Pack with Handpiece
- Sturdy Plastic Holder with Belt Clips for Handpiece & Power Pack
- Power Adaptor
- User Manual

UFIBER

FLOATING DAMPERS FOR BRUSHES

The NOGA MT Floating Damper is engineered for reliable deburring and surface finishing, compensating for surface irregularities and brush wear to maintain stable tool contact and consistent results. Its integrated spring mechanism delivers controlled, constant pressure, ensuring uniform performance in CNC and automated applications.



KEY ADVANTAGES

- Maintains uniform cutting conditions throughout the process.
- Minimizes the need for precise depth adjustments.
- Improves consistency of edge finishing.
- Reduces tool wear and extends service life.
- Eliminates programming adjustments to compensate for bristle wear.

TYPICAL APPLICATIONS

- Surface finishing using **UFIBER** brushes.
- Automated deburring and polishing on CNC machines.
- Robotic deburring and polishing systems.
- Repeatable finishing where stable brush contact is required.

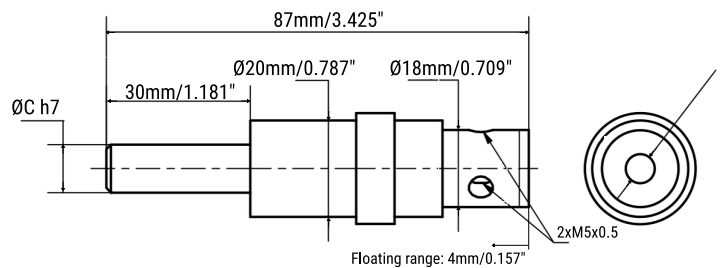
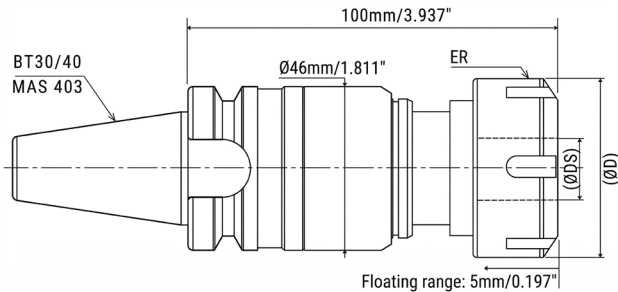
UFIBER

FLOATING DAMPERS FOR BRUSHES

TECHNICAL SPECIFICATIONS

SERIES UF-FD...BT...		
SKU	DESCRIPTION	Ø D mm / inch
UF8853	UF-FD-DS06-BT30	6 mm / 0.236"
UF8854	UF-FD-DS10-BT30	10 mm / 0.394"
UF8855	UF-FD-DS12-BT30	12 mm / 0.472"
UF8856	UF-FD-DS16-BT30	16 mm / 0.630"
UF8857	UF-FD-DS06-BT40	6 mm / 0.236"
UF8858	UF-FD-DS10-BT40	10 mm / 0.394"
UF8859	UF-FD-DS12-BT40	12 mm / 0.472"
UF8860	UF-FD-DS14-BT40	16 mm / 0.630"



SERIES UF-FD-DS...(END TYPE)			
SKU	DESCRIPTION	Ø C mm / inch	Ø DS mm / inch
UF8851	UF-FD-DS06-C06	6 mm / 0.236"	6 mm / 0.236"
UF8852	UF-FD-DS10-C10	10 mm / 0.394"	10 mm / 0.394"





PARAMETER	VALUE
Interface	MAS 403-BT30 / BT 40
Max. Speed	6,000 rpm
Tool Shank Capacity ØDS	Ø6/Ø10/Ø12/Ø16 mm(0.236/0.394/0.472/0.630")
ER Collet ØD	ER25UM for BT30 / ØD=42mm (1.653")
Ultra Precision <5µm Runout	ER25UM for BT40 / ØD=50mm (1.968")
Floating Range	5.0 mm (0.197")
Spring Pressure	Approx. 50N

PARAMETER	VALUE
Interface	END TYPE
Max. Speed	12,000 rpm
Balance	High-Speed Balance
Tool Shank Capacity	Ø6 (0.236")
Tool Shank Diameter ØC	UF8851 Ø6 (0.236") / UF8852 Ø20 (0.394")
Floating Range	4.0 mm (0.157")
Spring Pressure	Approx. 20N

SERIES UF-FD...BT.... Spare Parts

-  BT30 Pull Stud M 12 x 1.75
-  BT40 Pull Stud M 16 x 2

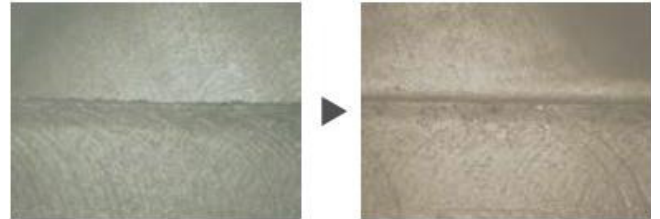
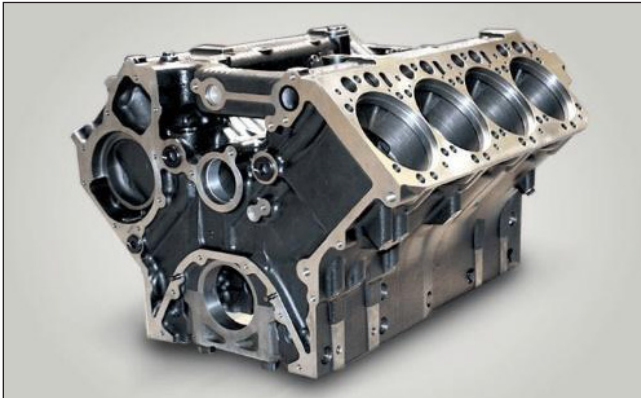
SERIES UF-FD-DS...(End Type).... Spare Parts

-  UF0022 Socket Allen Key 4 mm
-  UF0024 Clamping Screws - 2 X M5 x 5 x 0.5

UFIBER

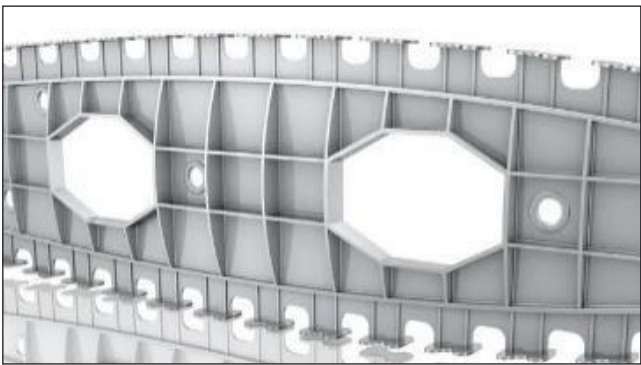
CASE STUDIES - DEBURRING

BURR REMOVAL IN AUTOMOTIVE PARTS WITH SURFACE BRUSH



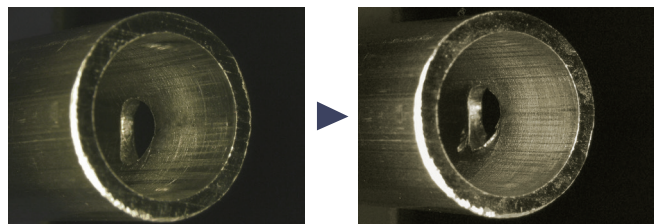
- **Material:** ADC12 (A383.0) Aluminum - Silicon Alloys.
- **Cutting Parameters:** S = 6000RPM, F = 1000mm/min. (34.9inch/min.), DOC = 0.5 mm (0.0196").
- **Surface Brush:** UF1625 / UF-FB-W-D025-L75
Ø25 Grit#1000 (White)

BURR REMOVAL IN AEROSPACE PARTS WITH SURFACE BRUSH



- **Material:** 7075 Aluminum Alloy.
- **Cutting Parameters:** S = 6000RPM, F = 1000mm/min. (34.9inch/min.), DOC = 0.5 mm (0.0196").
- **Surface Brush:** UF1625 / UF-FB-W-D025-L75
Ø25 Grit#1000 (White)

BURR REMOVAL IN PIPES WITH CROSS-HOLE BRUSH



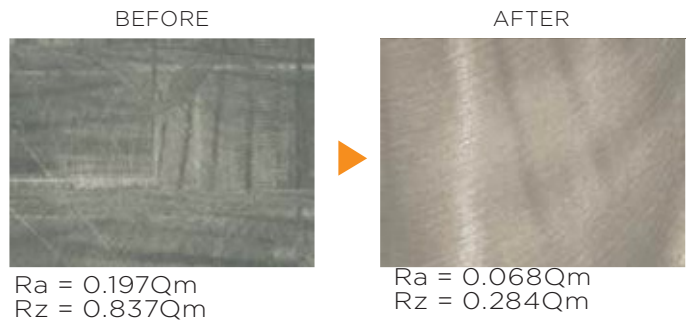
- **Material:** Aluminum.
- **Cutting Parameters:** S = 11000RPM, F = 1100mm/min. (44.3inch/min.).
- **Cross-Holeh:** UF2650 / UF-CH-W-D050-L60
Ø5 Grit#1000 (White)

UFIBER

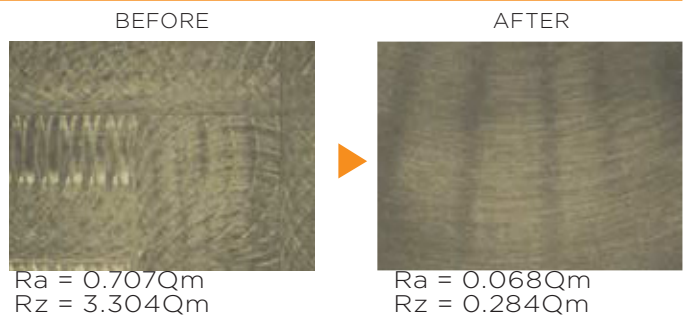
CASE STUDIES - TOOL MARK REMOVAL

CUTTER MARK REMOVAL WITH SURFACE BRUSH

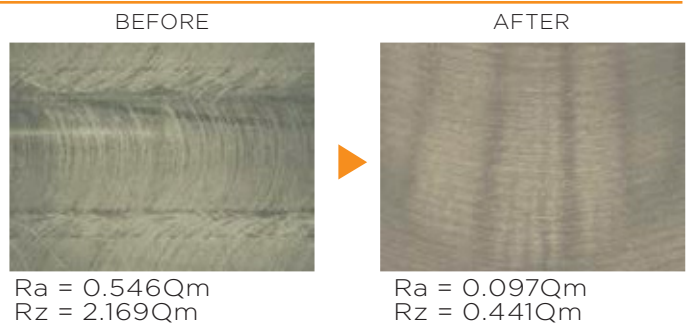
- **Material:** A7075 Aluminum Alloys.
- **Cutting Parameters:**
S = 6000RPM, F = 2000mm/min. (79inch/min.),
DOC = 0.5 mm (0.0196").
- **Surface Brush:** **UF1625 / UF-FB-W-D025-L75**
Ø25 Grit#1000 (White)



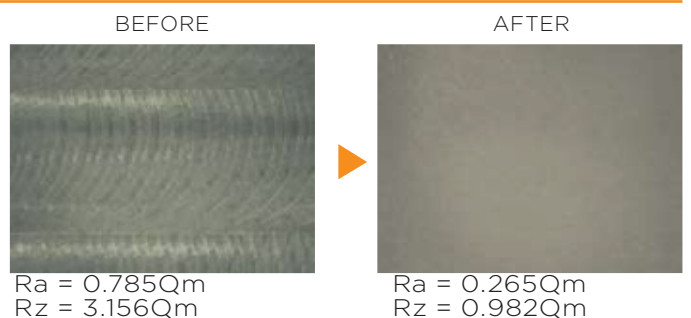
- **Material:** Inconel 625.
- **Cutting Parameters:**
S = 6000RPM, F = 800mm/min. (32inch/min.),
DOC = 0.5 mm (0.0196").
- **Surface Brush:** **UF1325 / UF-FB-V-D025-L75**
Ø25 Grit#400 (Violet)



- **Material:** SCM440 / AISI Steel Alloy.
- **Cutting Parameters:**
S = 6000RPM, F = 1000mm/min. (39.5inch/min.),
DOC = 0.5 mm (0.0196").
- **Surface Brush:** **UF1325 / UF-FB-V-D025-L75**
Ø25 Grit#400 (Violet)



- **Material:** Titanium Ti-6Al-4V.
- **Cutting Parameters:**
S = 6000RPM, F = 1000mm/min. (39.5inch/min.),
DOC = 0.5 mm (0.0196").
- **Surface Brush:** **UF1325 / UF-FB-V-D025-L75**
Ø25 Grit#400 (Violet)



PIONEERING A NEW ERA IN SURFACE FINISHING

All NOGA products meet the strict requirements of ISO 9001 and ISO 14001.

NOGA reserves the right to make changes in any of its products without prior notice. © Copyright NOGA Engineering & Technology (2008) Ltd. All rights reserved. No part of this publication may be reproduced, transcribed, stored in an electronic retrieval system, translated into any language or computer language, or be transmitted in any form whatsoever without the prior written consent of the publisher.

UFIBER

Scan the QR code for more information about the UFIBER range



Scan the QR code for UFIBER application demo - Surface Finishing

